



MANTA MARINE DESIGN
BUILDING YOUR OWN CRADLE BOAT

Cradle design - "Joey"

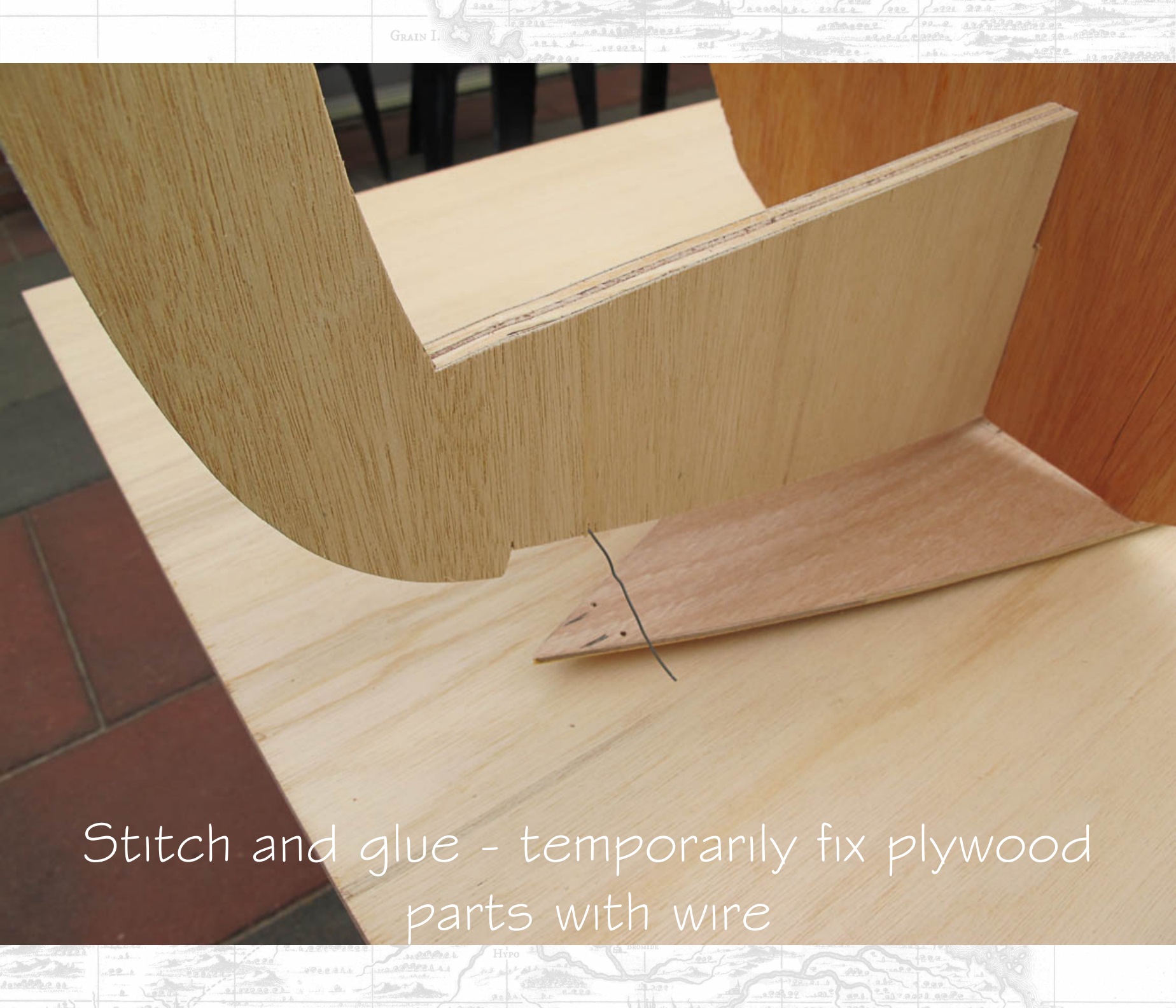
www.MantaMarineDesign.com



Transferring the lines to the plywood

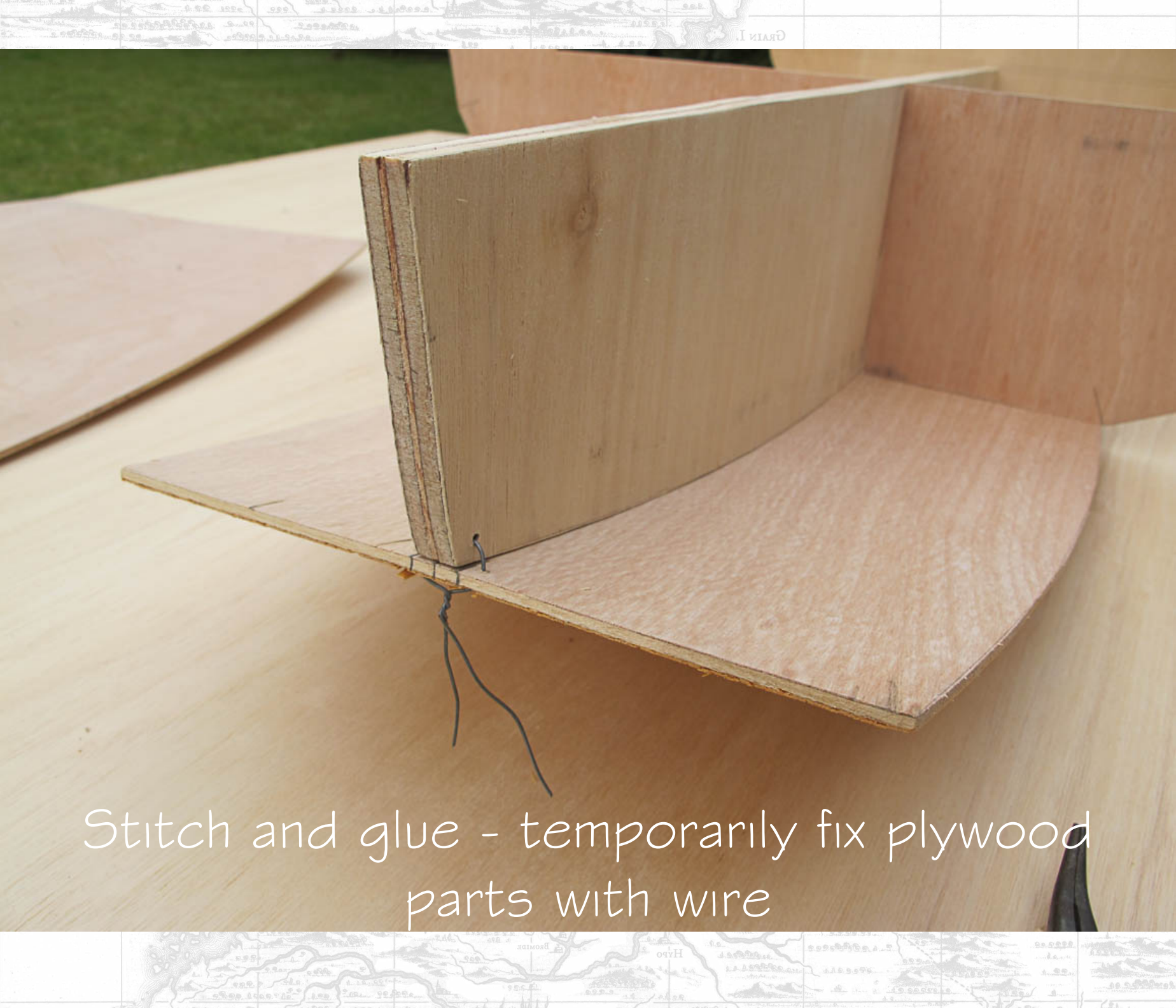


Transferring the lines to the plywood



Stitch and glue - temporarily fix plywood parts with wire





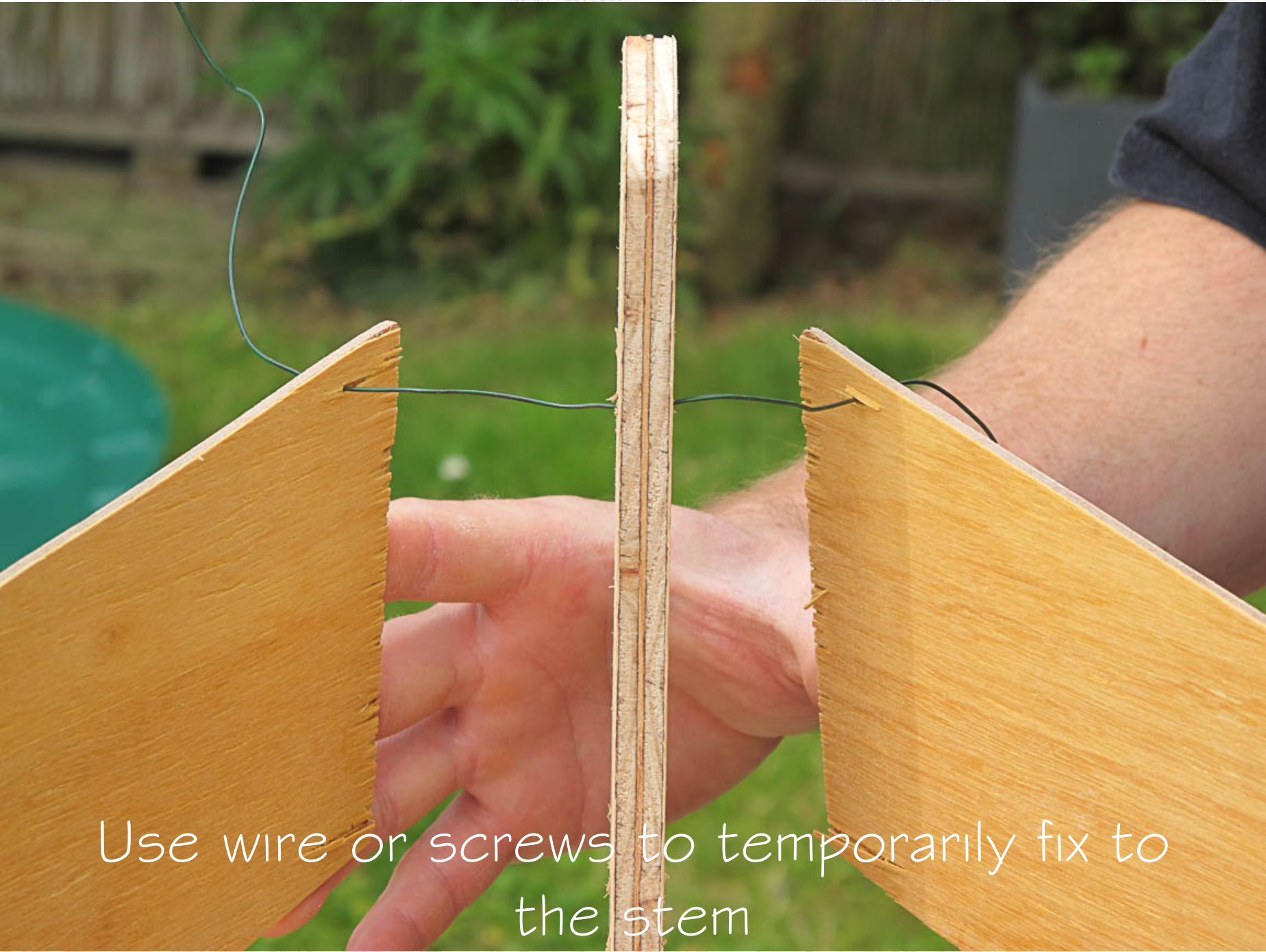
Stitch and glue - temporarily fix plywood parts with wire



First assembly with only wire



Adding the first shell strake



Use wire or screws to temporarily fix to the stem

quality control during the building process



HARDHOUTEN
MULTIPLE
1800-333-3333



HARDHOUTEN
MULTIPLE







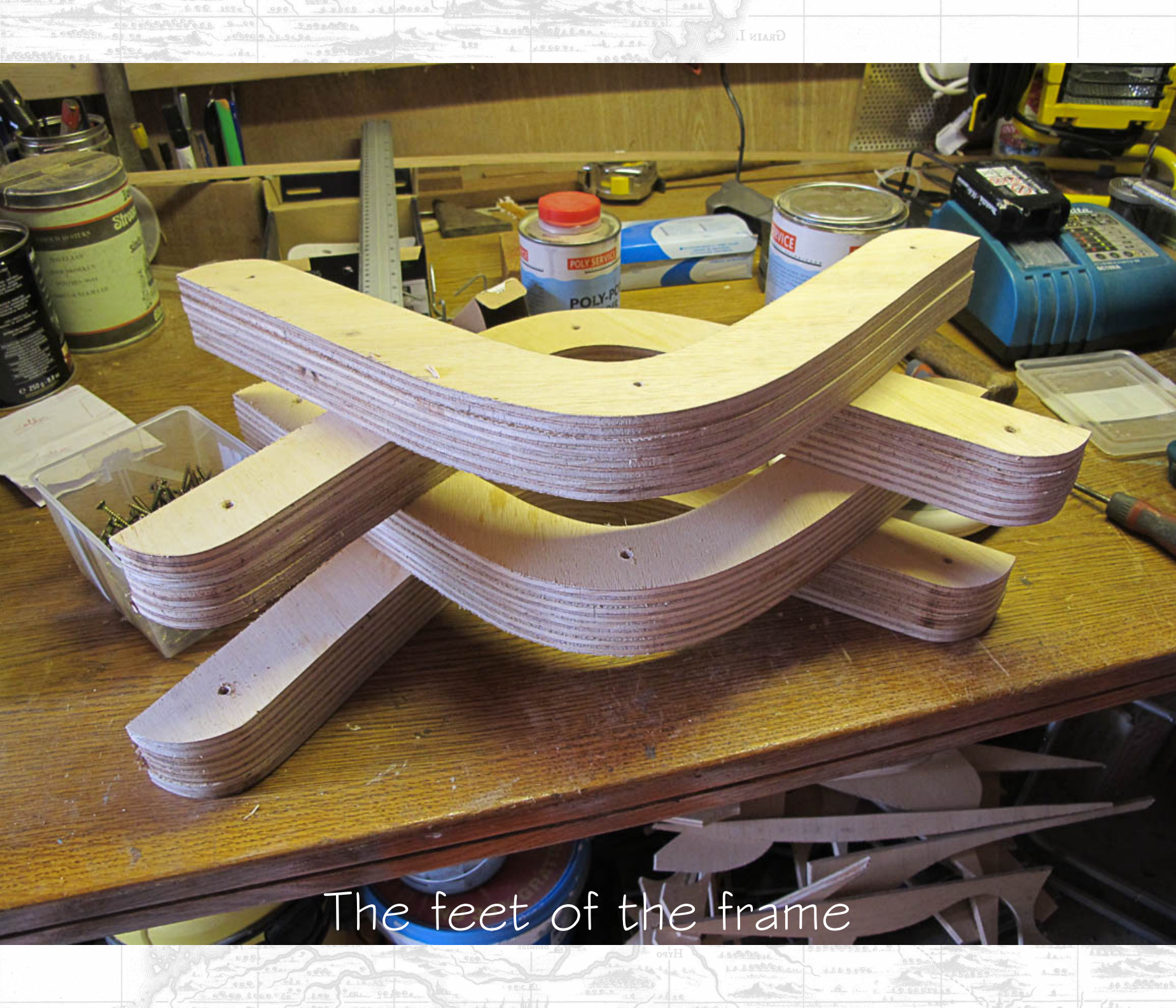
Adding the inner box







Assembling the stand



The feet of the frame



Deck added



Adding the 'bulwark' at the deck edge



Finishing with half round bar





Optional mast fixation

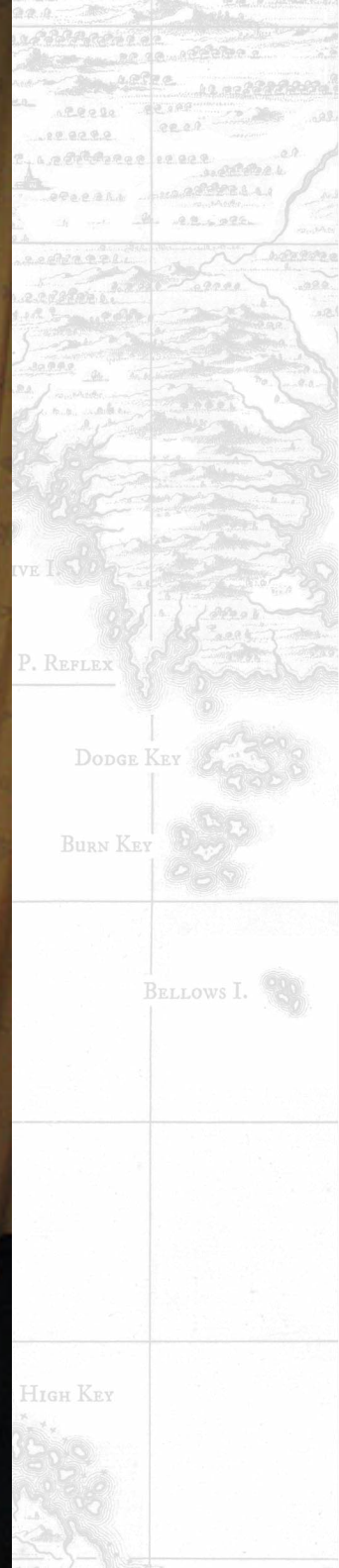




Painting



Stability and overload test



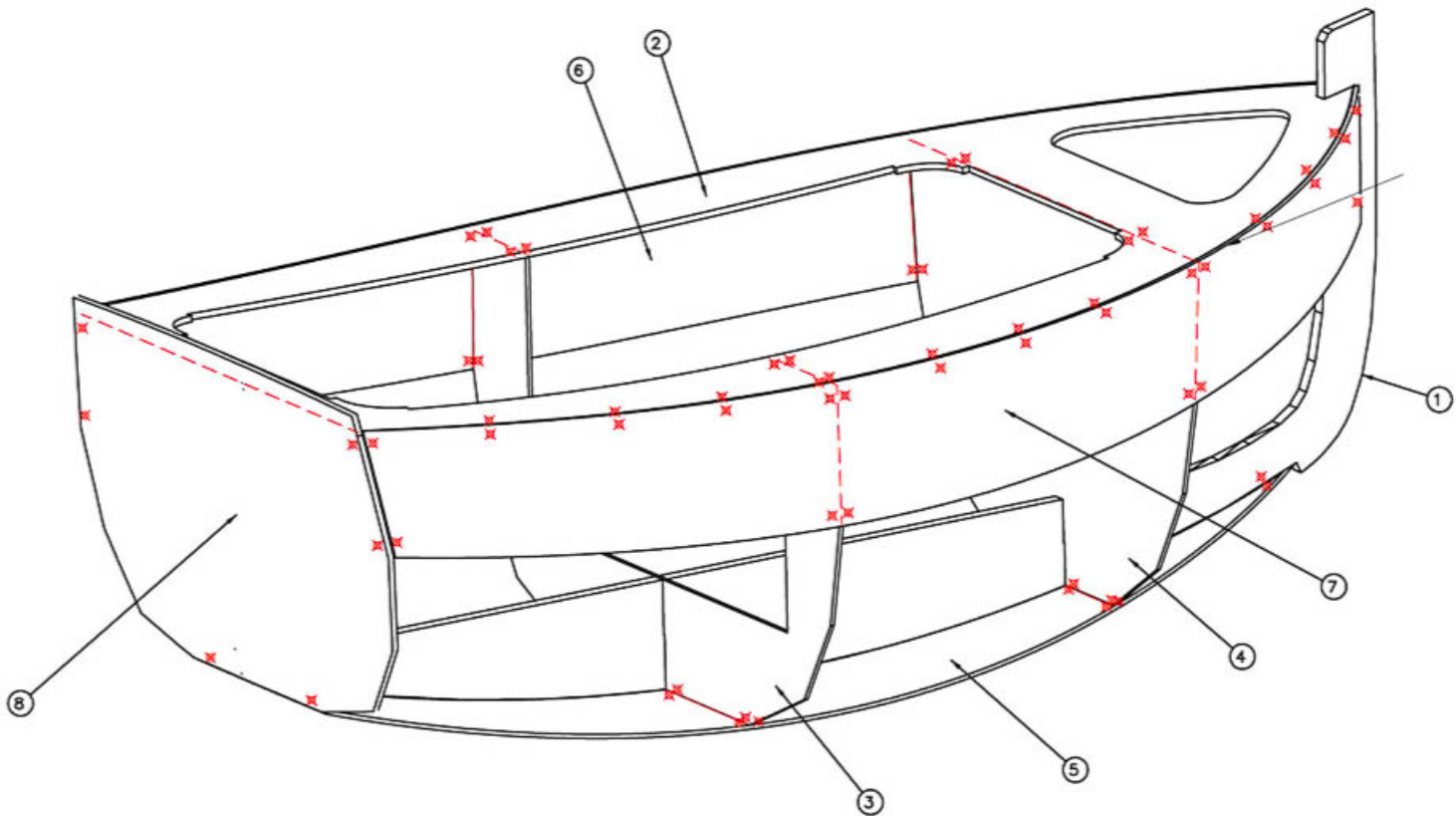
Ready for action



In succesful operation with a happy baby



If you would like to build your own cradle boat, please visit the website. You can find the design and purchase information in the portfolio under small boats



website: www.MantaMarineDesign.com
email: info@MantaMarineDesign.com